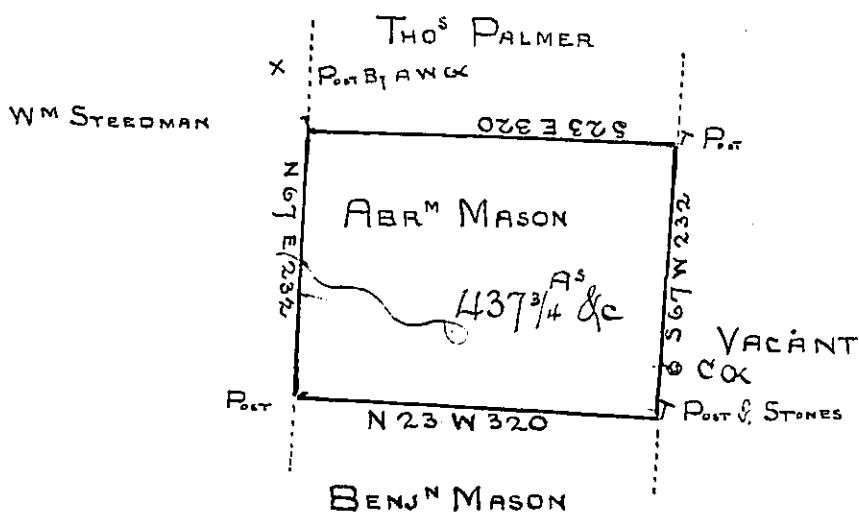


Butler
LUZETTE.



Draft of a tract of land Called *Situate in the County of*
Luzerne Containing four Hundred and thirty Seven Acres $\frac{3}{4}$ Allowance
 Surveyed for Abraham Mason the 27th Day of May 1793 by virtue
 of a Warrant dated the 25th day of March 1793

To Daniel Brodhead Esqr }
 Survey Genl }

by Wm Gray D.S.

IN TESTIMONY that the above is a copy of the original remaining on file in the
 Department of Internal Affairs of Pennsylvania, made con-
 formably to an Act of Assembly approved the 16th day of
 February, 1833, I have hereunto set my Hand and caused
 the Seal of said Department to be affixed at Harrisburg, this
 Thirty First day of January 1877

Wm Mcandless
 Secretary of Internal Affairs